

Alpha Road

SOUTHVILLE

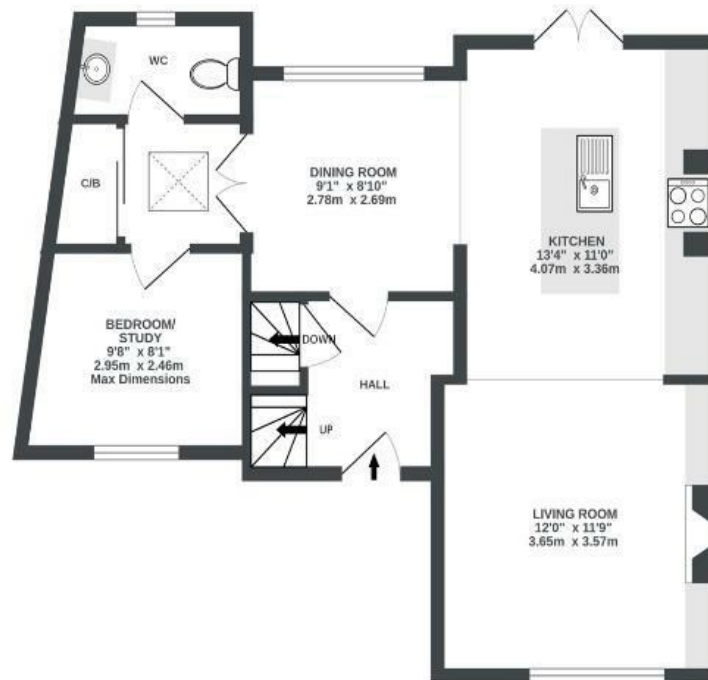
APPROXIMATE FLOOR AREA
106.2 SQM / 1143 SQFT



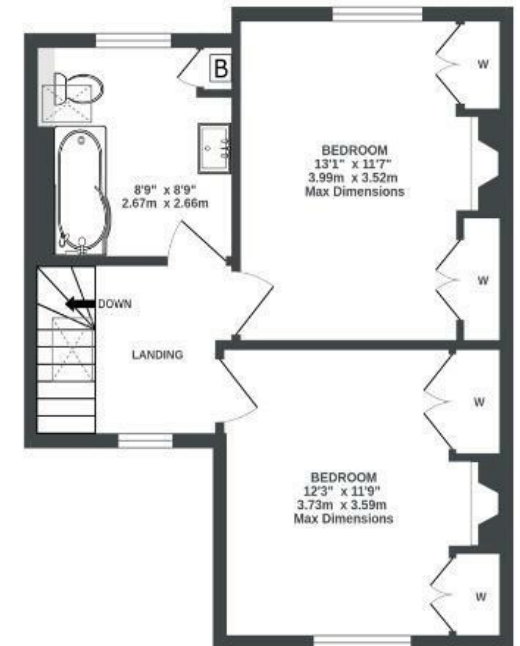
BASEMENT
159 sq.ft. (14.7 sq.m.) approx.



GROUND FLOOR
566 sq.ft. (52.5 sq.m.) approx.



1ST FLOOR
419 sq.ft. (38.9 sq.m.) approx.



Illustrations are for reference purposes only, measurements are approximate, not to scale.

Boardwalk

Alpha Road , BRISTOL



£625,000



3 Bedrooms



Bristol, BS3

1DH



2 Bathrooms

"I fell in love with this house as soon as I walked in. It has always felt like a sanctuary to me. The location is incredible, the neighbours have been wonderful and the house itself was so great for having friends round and just relaxing. As I work from home, it was really lovely to have a space that I could close off at the end of the day, too. Also, for running and dog walking, you have the harbour and Victoria Park really close, not to mention Leigh Woods and Ashton Court. Popping to Wapping Wharf is so easy and having the M Shed and Arnolfini so nearby is absolutely incredible if you have little children."

